



CROOKSTON PARK & RECREATION

YOUTH HOCKEY POLICY

PARENT/PLAYER HANDBOOK

CROOKSTON CIVIC ARENA

281-2465

Dear Parents, Players and Patrons,

I would like to give you a little background on how our Hockey Policy originated. The Park and Recreation Department felt we should take an in-depth look at our Program. We felt a policy was in order to help guide or direct all of those involved with our program. A board was formed in 1984 to discuss and draw up the policy. The board consists of coaches and athletic directors from the college and high school as well as a representative from the Park Board, Blue Line Club, Recreation Department and other individuals concerned with the welfare of our program. These people met many times early in the mornings, before jobs, to put together a policy which would best cover all areas of our program. The Park Board then approved the final product. The Policy Board continues to meet twice a year to review and update the policy.

We ask for your cooperation in following the policies we have set forth as it will make things a lot easier for all of us involved.

If you have any questions concerning hockey or the arena, please feel free to stop by and talk to me or call me at 281-1242.

Sincerely,

Scott P. Riopelle
Arena Supervisor

SPR:pvh

Hockey Policy revised 1986, 87, 90, 91, 95, 97, 01, 03, 04, 05, 06, 07, 08

TABLE OF CONTENTS

CROOKSTON PARK BOARD MISSION STATEMENT	1
GOALS & OBJECTIVES	2
GENERAL POLICY	2-3
Number of scheduled games, tournaments and practices	2
Amount of playing time for lines	3
Number of player per team	3
Length of program	3
Cost of program	3
COACHES SEEK AND SELECTION COMMITTEE	3
TOURNAMENT COMMITTEE	3
COACHES POLICY	4
Responsibilities	4
PLAYERS POLICY	5-6
Team selection	5
Conduct	5-6
PARENT AND HOCKEY BOOSTER POLICY	6-8
Support - Parents	6
Support - Blue Line Club	8
Parent Team Representative	8
CODES	9-10
Coaches Code	9
Players Code	9
Parents Code	10
CHAIN OF COMMAND	11
HOCKEY POLICY BOARD	11
YOUTH HOCKEY DISCIPLINE PLAN	12
BEHAVIOR CODE	13
ATHLETIC ELIGIBILITY CODE STATEMENT	15
COACHES POLICY ADDENDUM	16

PARK BOARD MISSION STATEMENT GOALS & OBJECTIVES

To provide recreation and leisure time activities for all the citizens of Crookston to plan, develop and maintain a park system that allows the resident and visitors to enjoy the facilities and out door areas. To contribute to the quality of life for the City of Crookston which enables the municipality to prosper and grow.

RECREATION GOALS

1. TO PROVIDE AND MAINTAIN A WELL ROUNDED PROGRAM OF RECREATION ACTIVITIES FOR PRE-SCHOOL THROUGH SENIOR CITIZENS, WHICH INCLUDES BOTH ACTIVE AND PASSIVE ACTIVITIES.

- To keep accurate records of the programs including costs, number of participants, instructors, number of meeting times, and starting and ending dates.
- To promote the programs through the media, speaking engagements, flyers and posters.
- To constantly evaluate and upgrade the programs and activities so as to broaden the base of the Crookston Park and Recreation Department.
- To develop new programs and activities so as to broaden the base of the Crookston Park and Recreation Department.
- To train and develop recreation employees that direct, supervise, lead and develop leisure time activities for the Crookston residents.

2. POLICIES AND PROCEDURES

- The Park Board and Park and Recreation Department shall strive as nearly as possible to meet the recreation and leisure need of all its participants, young and old, active and passive, competitive and non-competitive.
- All Park and Recreation employees shall make special efforts to work safely and direct or supervise the participants, programs, and activities in a safe manner.
- The Park Board and Park and Recreation staff shall strive to treat all participants in a fair and reasonable manner.

3. COMPETITIVE ATHLETIC PROGRAMS

- Though highly competitive programs have great value for some, it is the policy of the Crookston Park Board to strike a balance between managing a highly competitive sports programs and using these programs as a teaching tool for establishing sound fundamentals.
- The Park Board, as a publicly funded agency, does not have the ultimate goal for selecting a few talented individuals and grooming them for high school competition.
- Though developing highly competitive programs are not the ultimate goal, the Park Board shall, none the less, work within certain parameters to accommodate those participants (to whatever extent is reasonable) with advanced programs and instruction, whenever it is feasible and shall be open to all who wish to participate.
- The Park and Recreation Department shall develop Athletic Programs that meet the needs of both boys and girls, men and women.

GOALS & OBJECTIVES

This policy is aimed at achieving three basic goals and objectives in our program.

- **TEACH BASIC POSITIVE FUNDAMENTALS OF HOCKEY**
- **PROVIDE A GOOD POSITIVE RECREATIONAL EXPERIENCE**
- **TEACH SPORTSMANSHIP, COMRADESHIP AND RESPECT FOR COACHES, OFFICIALS, SPECTATORS, FELLOW PLAYERS AND OPPOSING PLAYERS.**

GENERAL POLICY

This next section will cover our general policy. Rules have been set on scheduling, playing time, number of players per team and the length of our season. The Arena Manager will schedule All games. All participants, Peanuts/10U and older, MUST be a member of the Crookston Blue Line Club in order to participate in the youth hockey program.

NUMBER OF SCHEDULED GAMES, TOURNAMENTS AND PRACTICES

- | | |
|-----------------------|---|
| Bantams/
Girls 14U | Total number of games not to exceed 40 games pending success in post season play (playoffs). Number of league games will vary to accommodate league requirements. (Maximum of 4 practices per week, but not guaranteed.) |
| Peewees/
Girls 12U | Total number of games not to exceed 38 games pending success in post season play (playoffs). Number of league games will vary to accommodate league requirements. (Maximum of three practices per week but not guaranteed.) |
| Squirts/10U | Total number of games not to exceed 35 (maximum of 2 practices per week, but not guaranteed). Squirts/10U will have tryouts to divide the teams A and B which will be based on ability. The A and B traveling teams would then play a regular schedule with area communities. Travel for Squirts will be within an 100 mile radius of Crookston. Due to lack of teams in the 10U division attempts will be made where possible to also be within an approximate 100 mile radius of Crookston. |
| Peanuts | Participate in a program with other communities near the Crookston area not to exceed a 75 mile radius of Crookston. One to two practices per week but not guaranteed. Fun will be the main priority. |
| Mites | Play regular in-house program. |

AMOUNT OF PLAYING TIME FOR LINES

- ◆ Coaches will have equal as possible lines.
- ◆ Coaches shall attempt to play all players equal within game conditions.
- ◆ Coaches will have at their discretion the choice of who plays during critical situations (usually at games end). But coaches should keep in mind we are here to develop players.

NUMBER OF PLAYERS PER TEAM

The number of players registered in a particular age group will determine the number of teams in that division. There is a concern by the Policy Board that too few members on a team creates problems equal to or greater than those associated with a team that has the maximum number allowed. The Squirt and Peanut divisions, due to minimal body contact, fewer players per team is more workable than at the PeeWee and Bantam levels. Teams will be numerically selected as even as possible.

"B" teams will include the remaining players within that age category. If too many remain we will look into the possibility of a "B²" team or two (2) equal "B" teams, with consideration to what other area programs in our district are doing.

LENGTH OF PROGRAM.

- ◆ The hockey season will open with the youth hockey clinic in October and continue through the playoffs in March.
- ◆ The first game could be scheduled two weeks prior to December 1st.

COST OF PROGRAM.

- ◆ Try to keep cost of participation as low as possible.

COACHES POLICY

The City of Crookston Park and Recreation Department with approval of the Crookston Park Board declares a no-transportation of players' policy for coaches and supervisors employed in the Crookston Park and Recreation youth programs.

A coach and/or supervisor shall not transport a player(s) to or from a game(s) and/or practices(s) unless the player(s) is/are a member(s) of the coach's/supervisor's family or the coach/supervisor is accompanied by the player's parent or guardian.

Coaches or players exuding the scent of alcohol or using tobacco products shall not be allowed within the players bench or penalty box area.

The volunteer leader or coach in youth athletic programs contributes a great deal to his community through his services. However, beyond this he gains personal benefits as a result of his efforts. These benefits are in direct proportion to the services he renders and efforts he puts into the program. The following is the policy set forth for the coaches.

RESPONSIBILITIES

- ◆ You are the most important member of our hockey program. Make your teaching and influence be POSITIVELY felt.
- ◆ Conduct training and game experiences in such a manner that the welfare of each participant is always of paramount consideration.
- ◆ Become knowledgeable of the rules and regulations of MINNESOTA HOCKEY and the Park and Recreation Department.
- ◆ Will assist the hockey coordinator in developing programs and in selecting coaches to carry out our program.
- ◆ Furnish the hockey coordinator with equipment needs for the coming year(s) within his level.
- ◆ Be responsible for the conduct and welfare of his team at all times with special attention in the event of tournament participation.
- ◆ Report promptly for all practices and games.
- ◆ Be loyal to our hockey program, players and fellow coaches. Any criticism should be constructive and should never go beyond the departmental ears in that sport.
- ◆ You are a role model for our players. Proper conduct and language is always expected at home and on the road.

PLAYERS POLICY

The player section contains points of interest on team selection and conduct.

TEAM SELECTION

The "A" teams will be picked after a minimum of 5 tryout sessions with the cuts being made after the final session. If more time is needed, the final selection date will be given to the coordinator by the coaches. The teams will be selected by a team selection committee of three people in addition to the current coaches

There can be limited movement from team to team until January 1st in accordance to Minnesota Hockey rules. This should only be done in rare situations, if ever.

Should play within their age classification. Minnesota Hockey prohibits playing below their appropriate age classification. "Petitions requests to move up from coaches and/or parents are not allowed." Player movement requests from the hockey coordinator will be allowed based on the following criteria:

Grade Level Issues - Letting players participate with school age classmates.

Team Alignment Issues -When players are needed to provide adequate team numbers to fill team rosters.

Players wishing to make the jump to the high school team do not have to petition the Hockey Policy Board and will be accepted back into the Bantam/Girls program should they not make the high school teams, provided they have not exceeded an initial 3 week period of participation or played a game at the high school level.

Players may only move up if they have a birth date prior to the July 1st of the following year to the Minnesota Hockey cutoff of June 30th for each particular level. Players must have a birth date that is within 12 months of the particular level they are moving up to.

If insufficient numbers of girls at the peanut level prevent Parks and Recreation from having an 8U girls team, those players will automatically be eligible for participating in either the peanut program or 10U girls program pending parental/guardian approval.

The Hockey Policy Board highly recommends that girls participate in the girls program when separate boys and girls programs exist.

CONDUCT

Players should be gracious in defeat and modest in victory.

Officials should be respected. No one except the appointed captain should talk to an official and he

CONDUCT continued

No profanity will be tolerated before, during or after a practice or game.

Be a positive example for spectators; use self-control and good sportsmanship.

Accept seriously the responsibility and privilege of representing Crookston's hockey program.

You are financially responsible for all equipment checked out to you. Treat all equipment as if it is your personal property. Do not abuse it.

Always consult your coach if you are to miss a practice or game. Missing without good reason may cost you suspension from the next game or if necessary suspension from the team.

Procedure for player discipline.

The hockey coordinator should be informed of any gross discipline problem or suspension.

Coordinator and coaches will review problem and necessary measures will be taken.

If problem needs further consideration, the Park Board and/or Hockey Policy Board will be notified and problem will be acted on.

Education comes first.

PARENT AND BLUE LINE CLUB POLICY

SUPPORT - PARENTS

- ◆ Financial support for individual equipment necessary to play. Additional support may come from the Park Board and Blue Line Club.
- ◆ Must be good fans not fanatics. "Hockey nuts" should be a positive label.
- ◆ Inform coaches about family obligations throughout the season.
- ◆ Always use constructive criticism. There is a tremendous power in praise.
- ◆ Support the whole team. Friction between players and parents could ruin individual or team success.
- ◆ Be supportive of coaches. For minor problems schedule a meeting with hockey coordinator and/or team rep and coaches, discuss and resolve the problems.
- ◆ Procedure when problems arise.
 - Submit a signed letter to hockey coordinator or Parks & Recreation outlining concern. Any signed letter will be responded to on a timely basis.
 - Appropriate meetings will be held with hockey coordinator and concerns will be acted upon on a timely basis.
 - Coordinator will channel solution(s) to proper parties (see chain of command, page 11) for review.

QUESTIONS AND CONCERNS – PARENTS

Be supportive of coaches. For problems, questions, and concerns, parents are required to follow these rules:

1. 24 hour cooling off period. **DO NOT** approach an official, coach or team member with a complaint until after this period. **IF THIS POLICY IS IGNORED, AN IMMEDIATE 7 DAY SUSPENSION FROM ANY EVENT COULD BE ISSUED TO THE OFFENDER.**
2. Take the concern to the coach of the team in a calm and mature fashion after the 24 hour cooling off period.
3. If unable to resolve, bring concern to the Hockey Coordinator in writing. Appropriate meetings will be held and concerns will be acted upon immediately. The coordinator will then channel solutions to proper parties.
4. Parents are to familiarize themselves with ALL code of ethics and policies and procedures.
5. **ABUSE OF COACHES, OFFICIALS, PLAYERS, OR MEMBERS OF THE PARKS & RECREATION PROGRAM WILL NOT BE TOLERATED AT ANY TIME.**

ZERO TOLERANCE POLICY

Parks and Recreation will not tolerate inappropriate behavior of its players, coaches, officials, parents, or fans. To reinforce this fact each family of an A or B player is required, each year, to read and agree to live by its “code of ethics” and its “Zero Tolerance Policy”. Anyone unwilling to agree and sign the policy statement **WILL NOT** be permitted to be present at any practices or games of their child.

POLICY STATEMENT

All players, coaches, officials, parents, and fans are expected to conduct themselves in a sportsman-like manner. Parks and Recreation will **NOT** tolerate threatening language, angry outbursts, or other offensive, unnecessary conduct directed toward game officials, coaches, and/or players. An individual’s inappropriate behavior may result in immediate ejection from the arena and subsequent investigation. Following the investigation, the individual may be suspended from attending future events sponsored by Parks and Recreation. This includes practices, scrimmages, games and tournaments. A letter to the offending individual will follow this action, with a copy forwarded to the Director of Minnesota Hockey District 16.

TRYOUT PRESSURE

Let’s not kid ourselves; the players feel the pressure of tryouts. If they don’t think about the tryout process, they will more than likely be reminded by their friends and parents. During the tryout process, it is important for parents to provide support and be upbeat. Telling your son or daughter how proud you are of them, to go out and do their best; and to have fun, and that whatever happens – you love the, is the best advice we can give you. There will be disappointments. It’s inevitable the player will not make a level that he or she wanted to. As a parent, you need to make sure that you step back and understand the words you choose and the feelings you reflect to your child. They will have an impact on them going forward. Positively reinforcing your child’s play, rather than critiquing the tryout process or criticizing other players, is best way to assist the players’ development. As we all know, once the new teams are formed and the first practices begin, the optimism of having a successful season becomes the focal point. With this in mind, as stated above **ALL** tryouts will be **CLOSED** to all except the coaches of that level, hockey coordinator, and members of the selection committee.

SUPPORT - BLUE LINE CLUB

- ◆ Financial support for "extra" of hockey program.
- ◆ Help organize parental support for teams.
- ◆ Obtain tournament sponsors and help organize youth tournaments.
- ◆ Inform Park Board of all prospective fund raisers.
- ◆ Park Board and Blue Line Club should set up a prospective annual budget and discuss needed equipment and repair following each season.

PARENT/TEAM REPRESENTATIVE

- ◆ Each team will have a Parent/Team Representative. The team representative is a communication link between the coach and the parents.
 - Duties
 - ⇒ Organize team functions
 - ⇒ Arrange for rides to out of town games when needed
 - ⇒ Assist coach in making decision regarding inclement weather and travel
 - ⇒ Locate motel rooms
 - ⇒ Keep game book
 - ⇒ Information source for their respective team
 - ⇒ Serve on tournament selection committee-
 - ⇒ Help resolve minor team problems
 - ⇒ Buffer between coach and parents
 - ⇒ Assist coach in coordinating locker room supervision
 - ⇒ Assists parents in recognizing commitment in completing all scheduled games with area communities (exception: weather)

Coaches' Code of Ethics

- * *Be reasonable in your demands on the young players' time, energy and enthusiasm. Remember that they have other interests.*
- * *Teach your players that rules of the game are mutual agreements which no one should evade or break.*
- * *Group players according to age, height, skill and physical maturity whenever possible.*
- * *Avoid over playing the talented players. The "just average" players need and deserve equal time.*
- * *Remember that children play for fun and enjoyment and that winning is only part of it. Never ridicule or yell at the children for making mistakes or losing a competition.*
- * *Ensure that equipment and facilities meet safety standards and are appropriate to the age and ability of the players.*
- * *The scheduling and length of practice time and competitions should take into consideration the maturity level of the children.*
- * *Develop team respect for the ability of opponents, as well as for the judgment of officials and opposing coaches.*
- * *Follow the advice of a physician when determining when an injured player is ready to play again.*
- * *Remember that children need a coach they can respect. Be generous with your praise when it is deserved and set a good example.*
- * *Make a personal commitment to keep your self informed on sound coaching principles and the principles of growth and development of children.*
- * *Develop confidence in each person as a player and as an individual.*

Players' Code

- * *Play for the "fun of it" not just to please your parents or coaches.*
- * *Play by the rules.*
- * *Never argue with the officials' decisions. Let your captain or coach ask any necessary questions.*
- * *Control your temper - "No mouthing off", breaking sticks or throwing other equipment.*
- * *Work equally hard for yourself and your team - your team's performance will benefit and so will your own.*
- * *Be a good sport. Cheer all good plays, whether your teams or your opponents.*
- * *Treat all players as you yourself would like to be treated. Don't interfere with, bully or take unfair advantage of any player.*
- * *Remember that the goals of the game are to have fun, improve your skills and feel good. Don't be a show-off.*
- * *Cooperate with your coach, teammates and opponents, for without them you don't have a game.*

Parents' Code

- * *Do not force an unwilling child to participate in sports.*
- * *Remember children are involved in organized sports for their enjoyment, not yours.*
- * *Encourage your child to always play by the rules.*
- * *Teach your child that honest effort is as important as victory so that the result of each game is accepted without undue disappointment.*
- * *Turn defeat into victory by helping your child work towards skill improvement and good sportsmanship. Never ridicule or yell at your child for making a mistake or losing a competition.*
- * *Remember that children learn best by example. Applaud good plays by your team and by members of the opposing team.*
- * *Do not publicly question the officials' judgment and never their honesty.*
- * *Support all efforts to remove verbal and physical abuse from children's sporting activities.*
- * *Recognize the value and importance of volunteer coaches. They give of their time and resources to provide recreational activities for your child.*

THROUGH A CHILD'S EYES-

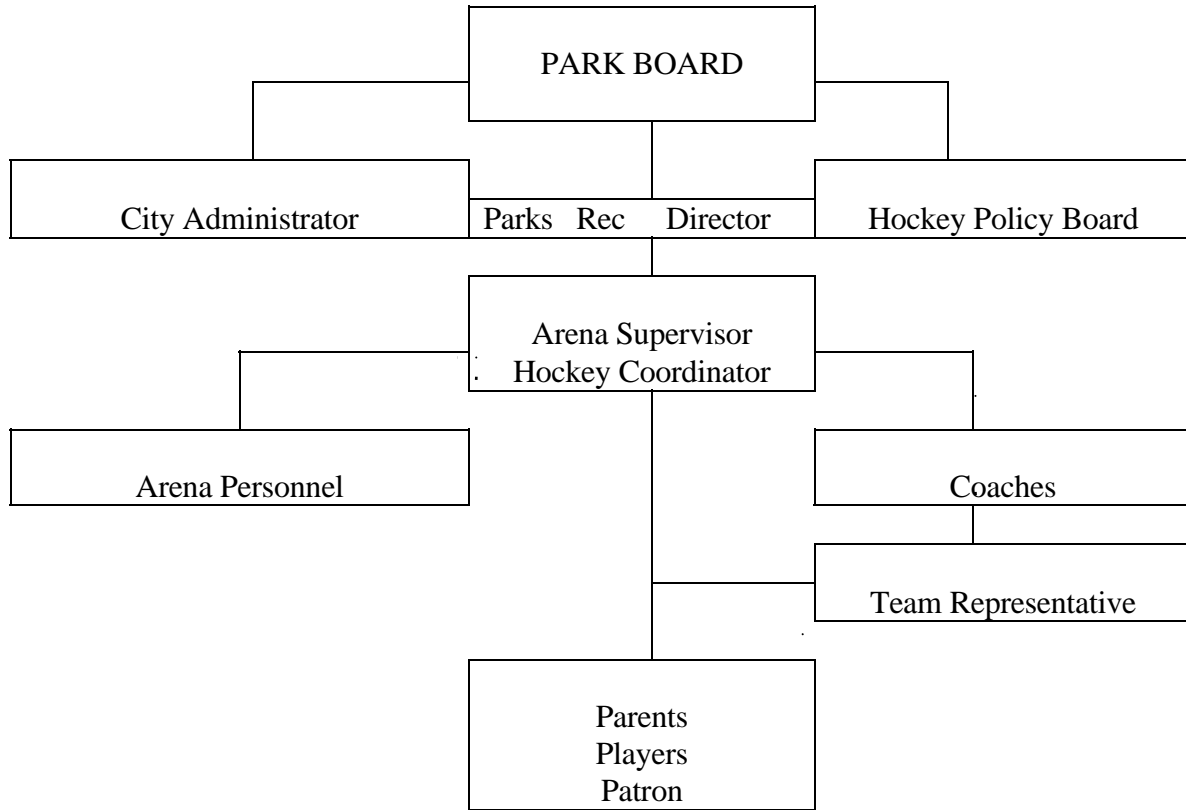
This poem was written by 11 year old Din Chabot, a handicapped student at Alex Muir School in Sault Ste. Marie, Ont. Din is the grandson of late and great NHL goaltender Lorne Chabot and his words undoubtedly express the feelings of thousands of children.

PLEASE LET ME LIVE BY MYSELF

*Well, here it is another hockey season,
So I am writing you for just one reason,
Please don't scream or curse and yell,
Remember I'm not in the N.H.L.*

*I am only 11 years old
and can't be bought or traded or sold,
I just want to have fun and play the game
And am not looking for hockey fame.
Please, don't make me feel I've committed a sin
Just because my team didn't win
I don't want to be that great, you see
I'd rather play and just be me.
And so, in closing, I'd like to give you one tip-
Remember, the name of the game is SPORTSMANSHIP.*

CHAIN OF COMMAND



In conclusion we would like to thank all of you for participating in our program. With a little help from all of you we can help our program develop into one of the best in the area.

Members of the Hockey Policy Board

Scott Kleven
Jon Bittner
Pres. Blueline Club
Tim Moe
Steph Helgeson

Gary Warren
Scott Riopelle
Jeff Perreault
Craig Morgan
Wayne Melbye

Don Donarski
Steve Biermaier
Tim Persson
Mike Hajostek
Sue Tiedemann

Members of the Park Board

Jay Amiot

Diane Holtman

Jim Kujawa

Gary Warren

Charles Reynolds

We urge all participants to follow the rules posted in the arena and help prevent damage. Parents, children, teams or others will be billed for damages in the arena. They will not be allowed in the arena until they have paid their bill for the destruction.

Youth Hockey Discipline Plan

VALID EXCUSES FOR MISSED PRACTICES AND GAMES

1. Family (weddings, funerals, special occasions)
- 2 Religion (all church activities)
3. School (band, choir, school work)
4. Remember you've committed to a team. It should be a high priority to make it to all games and practices.

GENERAL

1. Theft
2. Vandalism
3. Violence
4. Any Criminal act.

PARENTS CONDUCT

1. Squirt and older no parents in the locker room before or after the practice or game unless invited by coaching staff.
2. Responsible for supporting team discipline plan.
3. Do not interfere with the coach and conduct themselves in a proper manner at games.
4. Follow the Ten Commandments of Parental Behavior.

HEALTH AND SCHOOL

1. Must be attending a public, private, or home school on a regular basis.
2. Wear Stocking caps and jackets during the season.
3. Inform the coaching staff of any injuries you have.
4. Possession or consumption of illegal drugs, controlled substance or tobacco will result in a 2 week or 2 game suspension, whichever is greater, assessed from the date of the infraction. The player is allowed to practice during this suspension.
5. Curfew game day 10:00 p.m.
6. Minimum grade point average.

CONSEQUENCES

1. 1 PERIOD SUSPENSION
2. 2 PERIOD SUSPENSION
3. 1 GAME SUSPENSION
4. Any ineligibility pursuant to MSHSL rules shall result in a suspension of 2 weeks or 2 games whichever is greater. A player will continue to be ineligible beyond the two weeks if the player doesn't get the failure signed off by the teacher. The suspension will start the first game after the report of ineligibility. A player is allowed to practice during the suspension. However, a coach might decide to use practice as a study table.

CROOKSTON PARK & RECREATION
BEHAVIOR CODE

WELCOME PARENTS, PLAYERS AND FAMILIES
TO ANOTHER SUCCESSFUL AND ENJOYABLE YEAR OF HOCKEY.

To be successful we need to have cooperation and a certain amount of discipline from all parties involved. We came up with a list of rules for coaches, players, and parents to keep our program running smoothly.

1. Tryouts selections are based on talent. Selections are not necessarily permanent as changes can be made until December 31st (Final rosters due on this date).
2. Coaches would like to keep the lines of communication open with everyone. We are open to suggestions from players and parents. If you have problems or concerns, please feel free to contact one of the coaches.
3. Coaches expect the players to be on time for practice. Players should be at the arena 15 minutes before practice to ensure they are on the ice at their scheduled time. If players are late they may miss periods of hockey.
4. Power Skating/Shooting are part of the hockey program. Missing or misbehaving at these sessions will be handled the same as a regular team practice. Power Skating/Shooting are beneficial to each skater and will show in the success of each individual.
5. There are no unexcused absences. Your coach expects to hear from you, before practice or games, when you cannot be in attendance. We will be flexible but you must communicate with us.
6. SCHOOL IS # 1. Players having trouble in school because of extra curricular activities will be dealt with. Detention will not be tolerated, players will miss periods of hockey if they are causing problems at school.
7. The coaches will play all players as equal as possible. There may be times in certain games where a power play or short handed situation occurs and switching the line around is for the good of the team, but overall we will be fair and give everyone playing time.
8. New rule in effect this year - "ZERO TOLERANCE" - no foul language, no arguing with the referee. Anybody doing it will get an automatic 2 minute penalty.
9. Parents are not allowed on the ice during practice without prior coaches approval. You can talk to the coach before practice if you would like to come out and assist, it will be the coaches discretion.
10. Players should be at the arena 1/2 hour before games (home and away).
11. Coaches would like 10 minutes with team after games before parents are allowed in the locker room.

Crookston Parks & Recreation Behavior Code, cont.

12. REMEMBER WE ARE REPRESENTING CROOKSTON both at home and away. We expect the players to be dressed neatly and act as ladies and gentlemen on and off the ice.

COACHES, PARENTS AND PLAYERS BEHAVIOR REFLECTS ON OUR COMMUNITY!

13. Again, whether you are in motels, restaurants, etc. we expect courteous respectful behavior!
14. COACHES ARE NOT BABY SITTERS. Coaches will not be responsible for players after games at home or away or tournaments, the coach is only responsible for his players during the game. If there are curfews, it is up to the players and parents to make sure it is followed. If rules are broken players will miss periods of hockey.
15. Treat our arena, locker room, lobby, etc. with respect. We will be using it for many years so don't abuse it.
16. All levels of PeeWees/12U and Bantams/14U will be asked to sign the Athletic Eligibility Statement. We, as upper grade coaches, will be following the rules. NOTE: Please READ, SIGN & RETURN the Athletic Eligibility Statement to your coach before the first game.
17. Remember players, you are a member of a team, you have responsibilities to others on our team. Respect one another and if you have a problem talk to your coach.
18. Be coachable! We want to work with you, so you can be the best you can be!

HAVE A GREAT YEAR. LETS PLAY HOCKEY.

Athletic Eligibility Statement

Statement to be signed by the participant
and by the participant's parent or guardian.

* I have read, understand, acknowledge receiving, and agree to be bound by the rules of the Crookston Youth Hockey Policy and Discipline Plan which contain the eligibility rules of the Minnesota State High School League (Park Board programs will be following these rules) and the Crookston Park & Recreation Behavior Code (hockey participants).

* As a student participating in the Crookston Park & Recreation program, I understand and accept the following responsibilities:

- ◁ I will respect the rights and beliefs of others and will treat others with courtesy and consideration.
- ◁ I will be fully responsible for my actions and the consequences of my actions.
- ◁ I will respect the property of others.
- ◁ I will respect and obey the rules set up by the Park Board, my school and the laws of my community, state and country.
- ◁ I will show respect of those who are responsible for enforcing the rules for my sports, my school and the laws of my community, state and country.

* Informed Consent: By its nature, participation in Park & Recreation programs includes risk of injury which may range in severity. Although serious injuries are not common in supervised park board programs, it is impossible to eliminate the risk. PARENTS OR GUARDIANS WHO MAY NOT WISH TO ACCEPT THE RISK DESCRIBED IN THIS WARNING SHOULD NOT SIGN THIS FORM. STUDENTS MAY NOT PARTICIPATE IN THIS PARK BOARD SPONSORED ACTIVITY WITHOUT THE STUDENTS AND PARENTS/GUARDIAN'S SIGNATURE. Participation can and have the responsibility to help reduce the chance of injury. Players must obey all safety rules, report all physical problems to their coaches, follow a proper conditioning program, and inspect their own equipment daily.

* By signing this we acknowledge that we have read the above information.

Student's Printed Name

_____/___/20___
Student's Signature Birth Date Grade Date

Parent or Guardian's Printed Name

Parent or Guardian's Signature

RETURN THIS FORM TO YOUR COACH/INSTRUCTOR PRIOR TO PARTICIPATION

Coaches Policy Addendum

I agree to the Crookston Parks & Recreation Department Policy that declares no transportation of players for coaches and supervisors employed in the Crookston Parks & Recreation youth programs.

A coach and/or supervisor shall not transport a player(s) to or from a game(s) and/or practice(s) unless the player(s) is/are a member(s) of the coach's/supervisor's family or the coach/supervisor is accompanied by the player's parent or guardian.

Coach/Supervisor Signature _____ Date _____

Zero Tolerance Statement